

## UK & IRELAND OFFICES

### BELFAST

Forsyth House  
Cromac Street  
Belfast BT2 8LA  
+44 2890 024 955

### BIRMINGHAM

2&3 The Pavillions  
Cranmore Drive  
Solihull B90 4SB  
+44 121 705 3222

### BRISTOL

Merlin House  
Gifford Court  
Fox Den Road  
Bristol BS34 8TT  
+44 1454 273 402

### CAMBRIDGE

9 High Street  
Histon  
Cambridge CB24 9JD  
+44 1223 420 400

### DUBLIN

209 Glencullen House  
Kylemore Road  
Inchicore  
Dublin D10 XY74  
+353 1 575 8455

## INTERNATIONAL OFFICES

### DUBAI

19th Floor, Office 1916  
The H Dubai Office Tower  
One Sheikh Zayed Road  
Dubai, UAE  
PO Box 333690  
+971 4 372 1260

### GLASGOW

3 Orbital Court  
East Kilbride  
Glasgow G74 5PH  
+44 1355 228 103

### LEEDS

4210 Park Approach  
Thorpe Park  
Leeds LS15 8GB  
+44 113 260 0172

### LONDON

88 Leadenhall Street  
London EC3A 3BP  
+44 207 481 4897

### MANCHESTER

Southgate Three  
323 Wilmslow Road  
Cheadle SK8 3PV  
+44 161 493 1860

### REIGATE

10 Perrywood Business Park  
Honeycrook Lane  
Redhill RH1 5JQ  
+44 1737 763 957

### HONG KONG

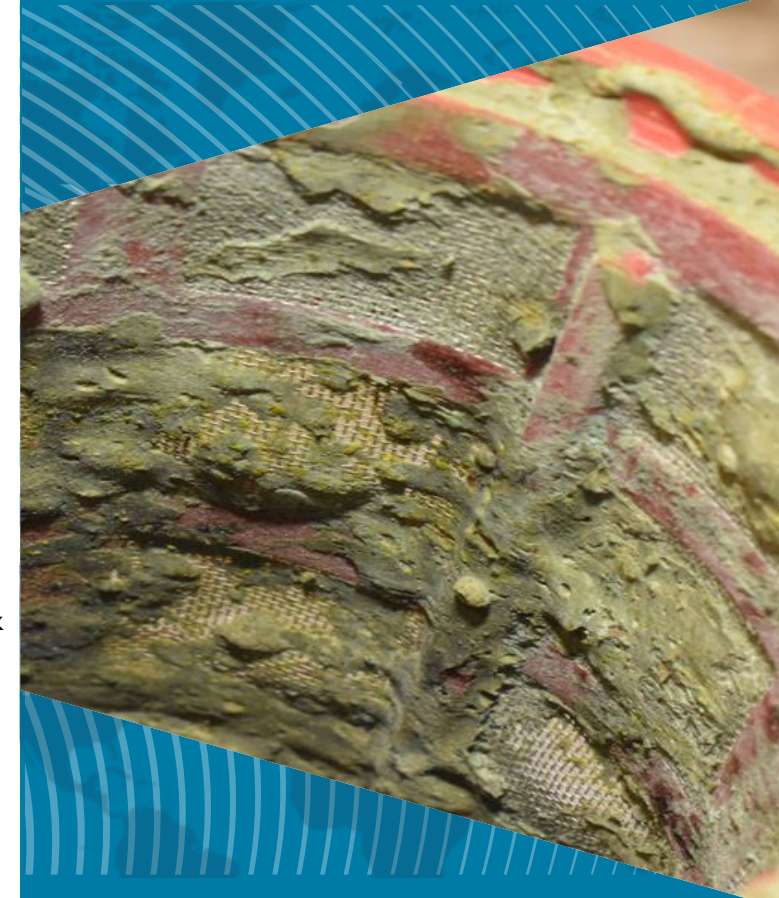
Room 602, 6th Floor  
Hoseinee House  
69 Wyndham Street  
Central, Hong Kong  
+852 2548 0577

### SINGAPORE

3 Pickering Street  
#01-66  
Singapore  
048660  
+65 6202 9280

# Hawkins

Leaders in forensic investigation



## Chemical Incidents

*Chemical incidents can be dangerous and costly to rectify. We specialise in determining the cause of an incident and providing regulatory, remediation and reinstatement advice.*





## Whilst some chemicals are benign, many can pose a risk to health and the environment

Understanding chemical properties aids effective incident management, limiting damage to property and infrastructure, while assisting in remediation.

Some chemicals require specialist handling and containment and non-compliance can cause injuries or even fatalities.

At Hawkins, we have extensive experience dealing with incidents involving:

- Equipment failure, chemical incompatibility and non-compliance with specifications.
- Contamination, undesired reactions, and lapses in safety protocols, risk assessment, and knowledge.
- Failure of pipework and rubber seals due to chemical incompatibility.
- Clogging of machinery filters arising from incorrect preparation procedures.
- Supply chain contamination.
- Fires resulting from uncontrolled self-heating of a variety of chemicals and materials.
- Property damage due to chemical degradation, from both deliberate and accidental exposure.
- Personal injuries, including from toxic gas inhalation, arising from a lack of knowledge of chemical hazards and poor labelling of containers and tanks.

[www.hawkins.biz](http://www.hawkins.biz)

## How Hawkins Can Help



- We inspect damage and can advise on the scope of works, the success of remediation work and where further improvements are required.
- We arrange targeted and relevant chemical analysis and subsequent interpretation of results in the specific context of the issue at hand.
- We review relevant regulations and guidance to advise on safe and regulatory compliant working procedures.
- Our experts can provide advice at all stages of the legal process, whether it be for the courts, arbitration or for other types of proceedings.
- Our advice assists our clients in understanding their legal roles and regulatory responsibilities.

## Service Types

Hawkins is a multi-disciplinary forensic practice established in 1980. With offices in the UK & Ireland, Dubai, Hong Kong and Singapore, we have over 120 experienced investigators able to provide advice and assistance at any stage of an incident, as well as provide ongoing support and guidance for the future.



### PRE-FAILURE RISK MANAGEMENT

Guidance on design, installation, and regulations to ensure safety, compliance, and risk reduction.



### ROOT CAUSE ANALYSIS

Scientific investigation into all aspects of an incident to determine what happened, why and in what sequence.



### EXPERT WITNESS SERVICES

Independent and impartial technical advice to assist Counsel during all aspects of litigation.



### POST-FAILURE ADVICE

Consultancy advice to reduce, mitigate and prevent risks associated with similar events happening in the future.



### MAJOR & COMPLEX LOSS

Global resources and multidisciplinary teams, armed with the knowledge, equipment and facilities to manage and investigate major and complex incidents.